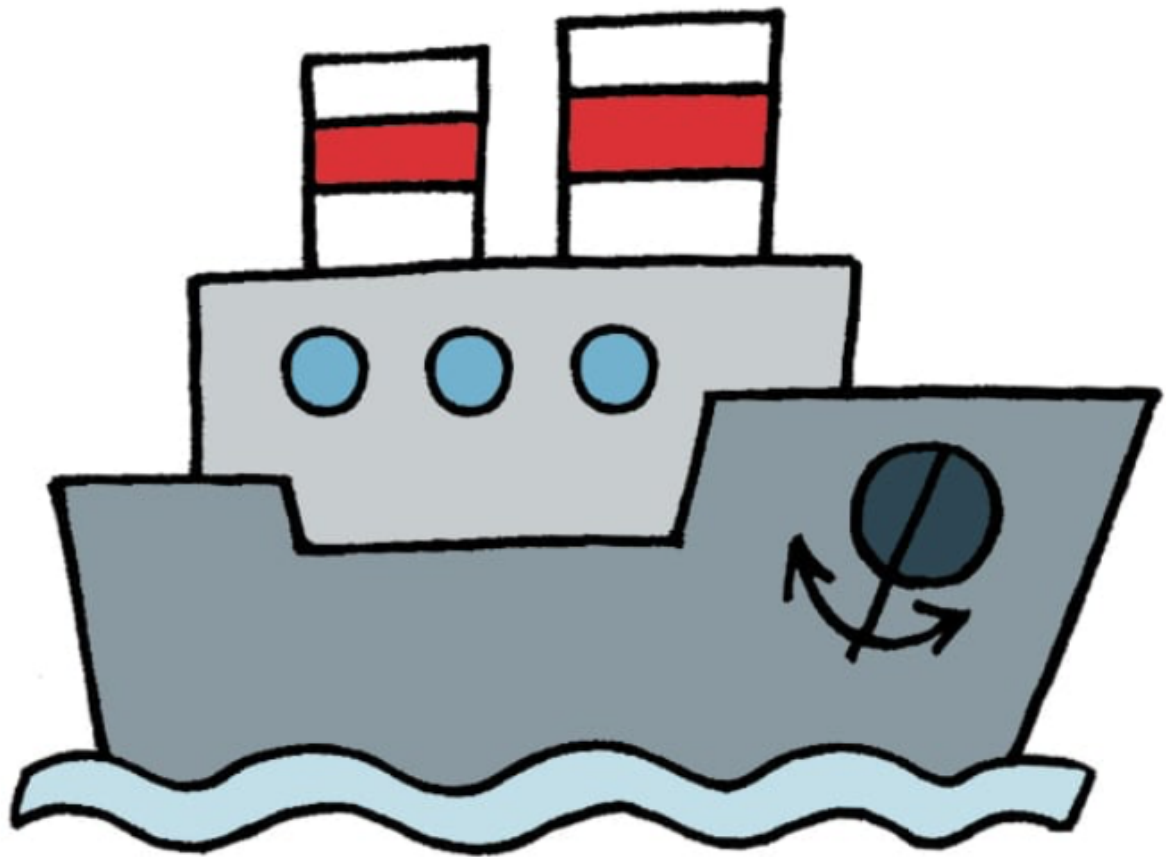


How to Draw a Ship

Difficulty-Beginner (K-12)

You will need:

- Paper
- Something to draw with (pencil, pen, marker, or whatever you'd like!)
- Colored pencils, crayons, or markers to color in your ship



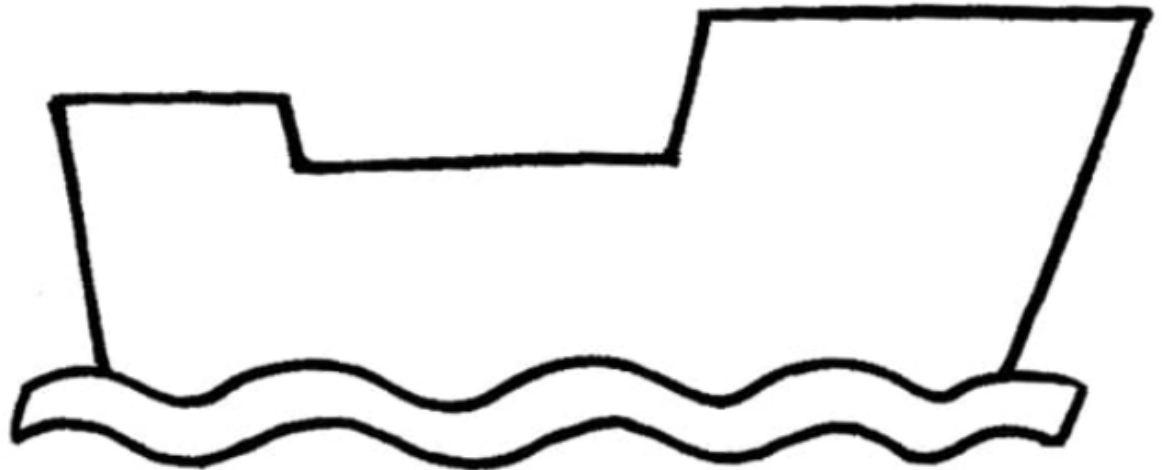
Step 1

Start by drawing the ocean waves using 2 wavy lines like this.



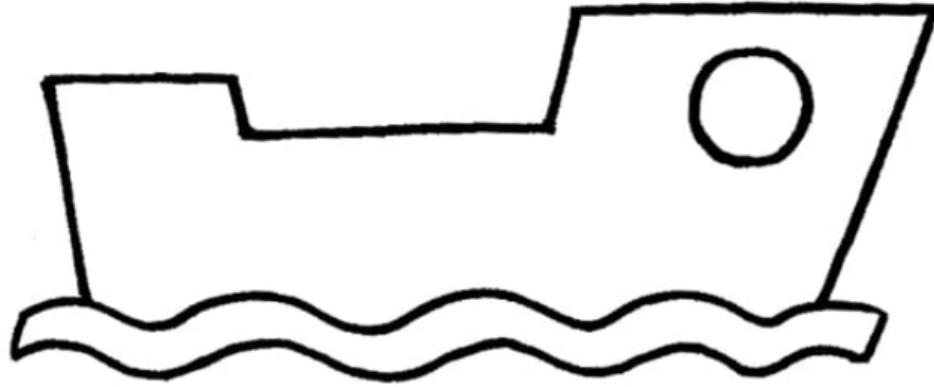
Step 2

On top of the waves we just drew, draw a shape like the one below. This is going to be the bottom of the boat. It's called the hull!



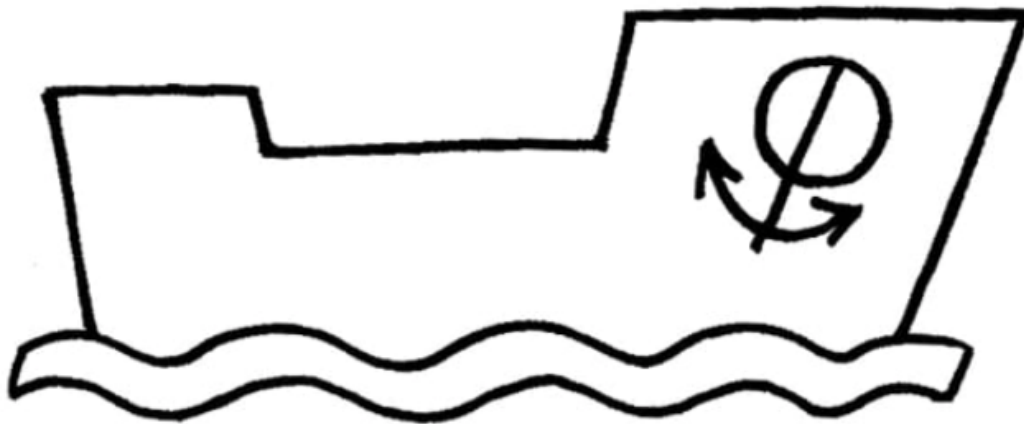
Step 3

On the right side of the hull shape, draw a circle. This is the hole that the anchor comes out of!



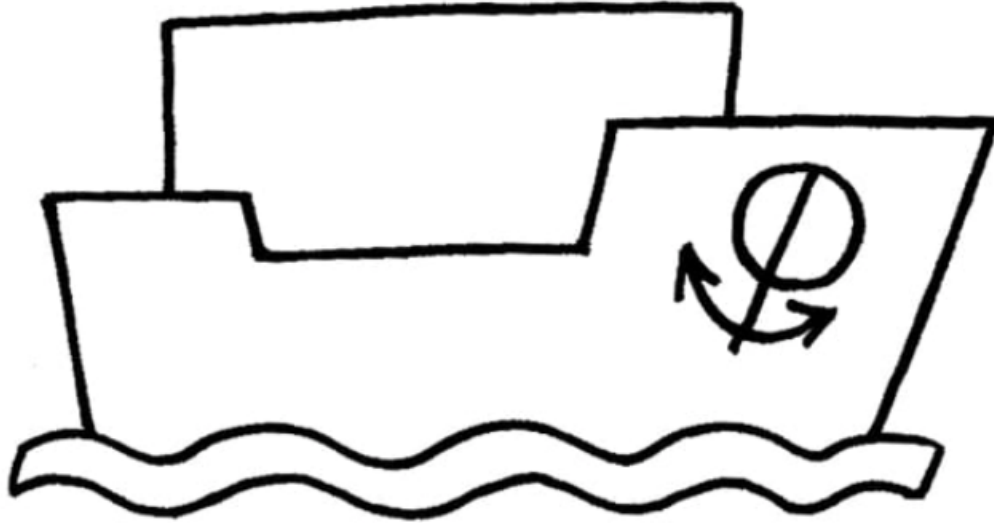
Step 4

Next, draw the anchor in this circle. Draw one line coming down at an angle, with a curved arrow line at the bottom.



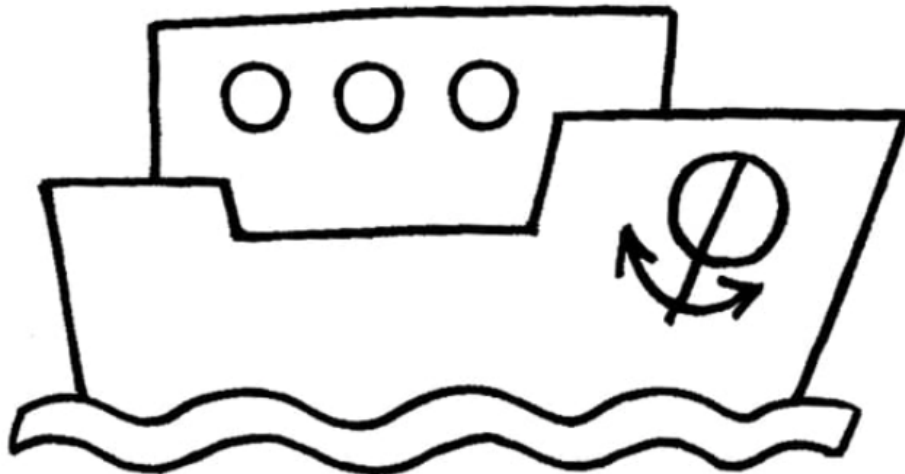
Step 5

Now draw a rectangle above the hull like this. This is where the captain and the crew control the ship. It's called the wheelhouse!



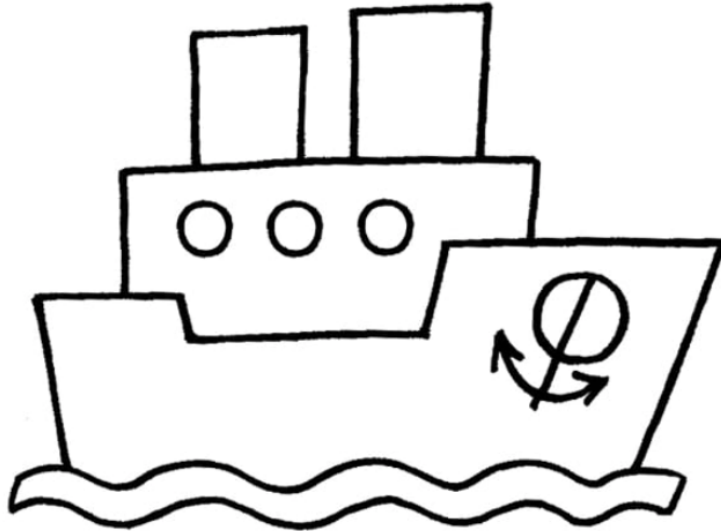
Step 6

Draw 3 circles on the wheelhouse. These are the ship's windows. They also call them portholes.



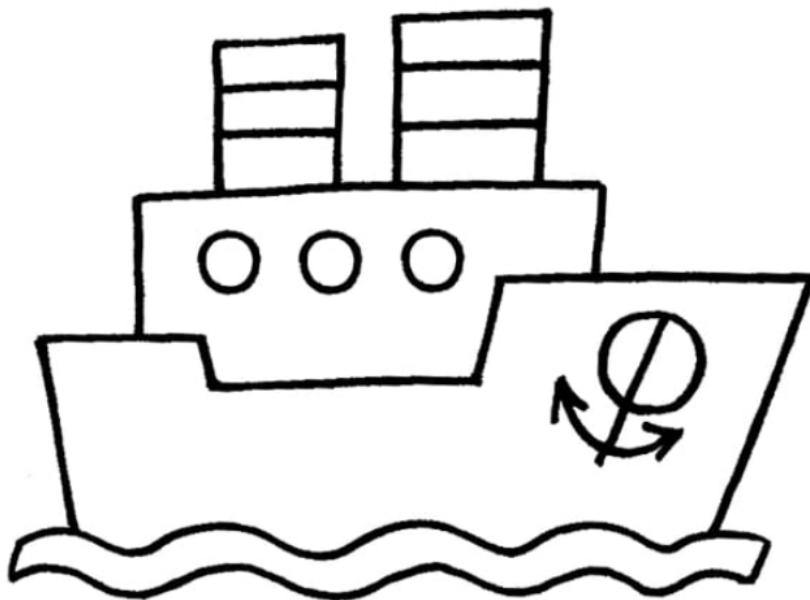
Step 7

Draw 2 rectangles on top of the wheelhouse like below. These are the ship's funnels. Funnels are like the ship's chimneys!



Step 8

Draw some horizontal stripes on the 2 funnels.



Step 8

Finally, let's add color to our ship! You can use whatever you'd like for this part, and remember to have fun with it!

