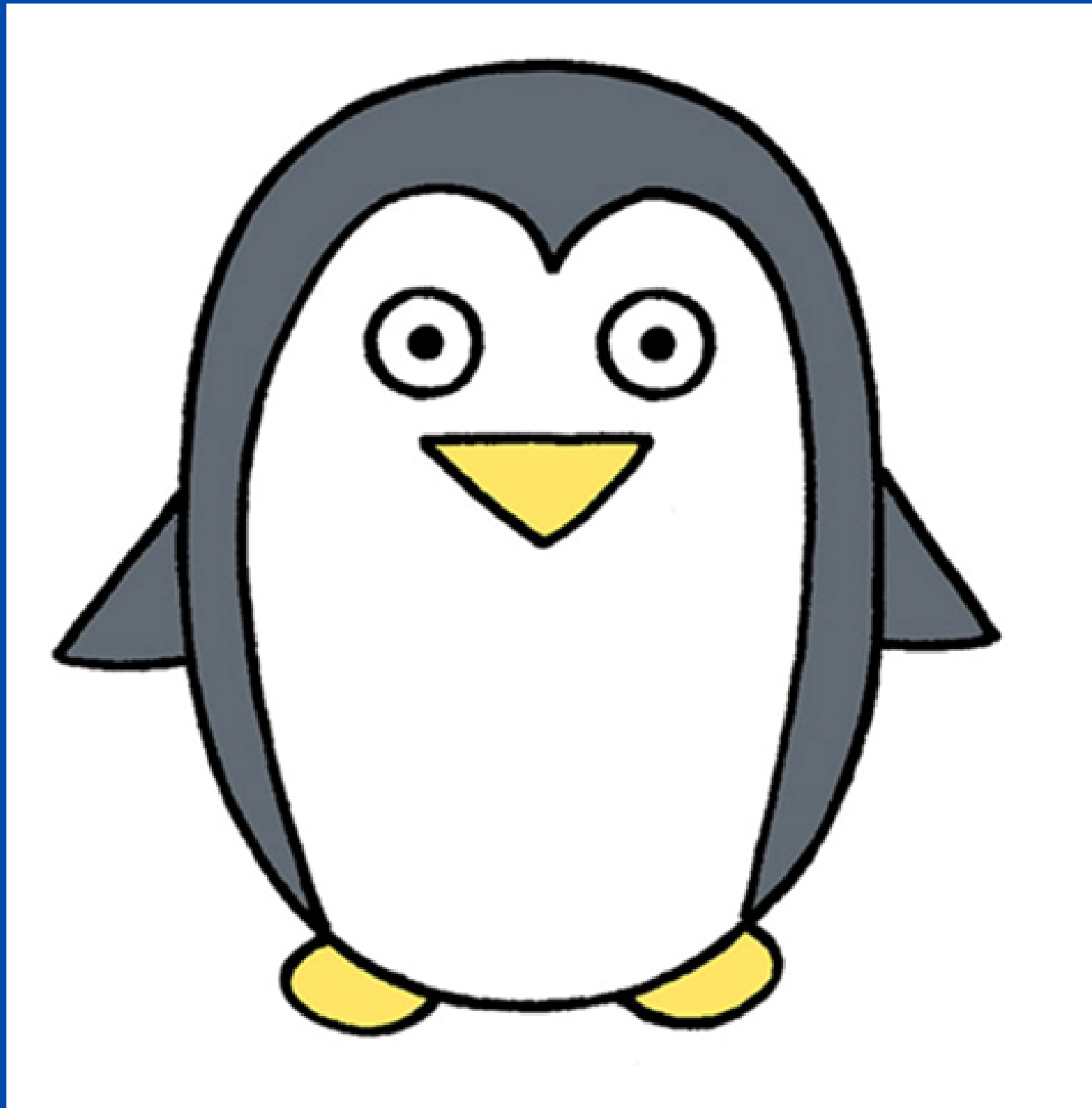




HOW TO DRAW A PENGUIN - GRADES K-12

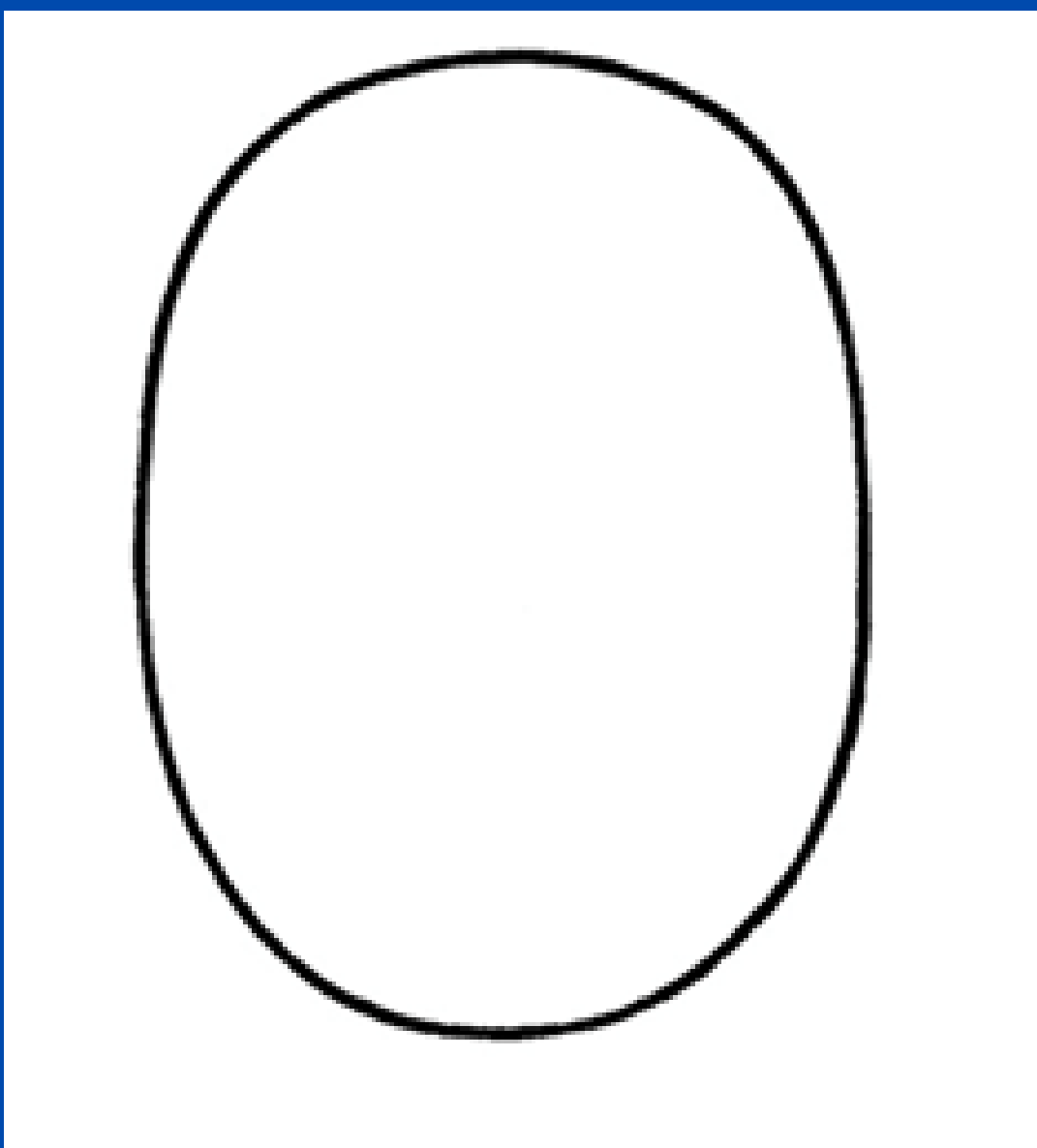


MATERIALS NEEDED: PAPER TO DRAW ON, SOMETHING TO DRAW WITH (PEN, PENCIL, OR MARKER), AND CRAYONS, PENCILS, OR MARKERS FOR COLORING IN.



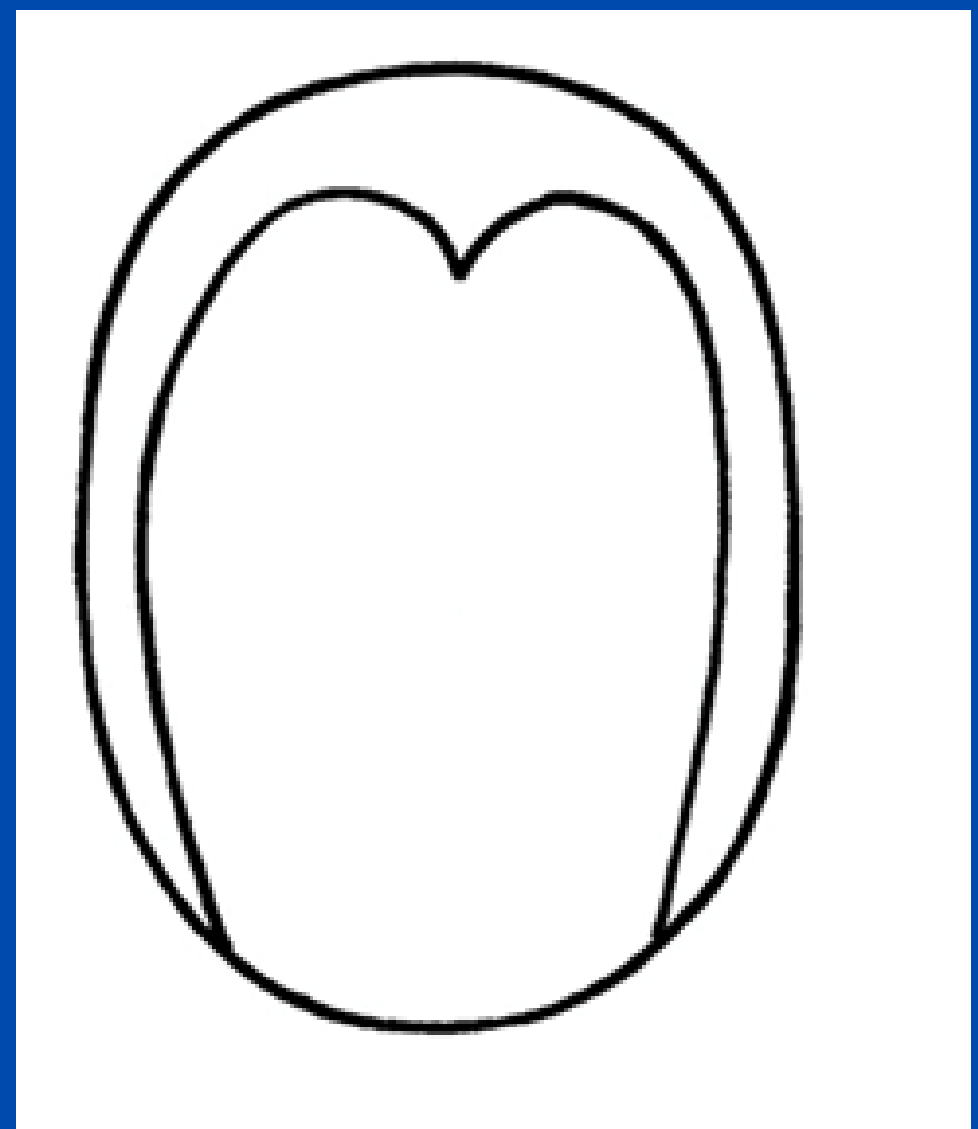
STEP 1.

**LET'S START WITH THE BODY.
FIRST, DRAW AN OVAL.**



STEP 2.

**NEXT, DRAW THE DETAILS ON THE
PENGUIN'S BELLY. THE SHAPE SHOULD
LOOK LIKE THE LETTER M.**



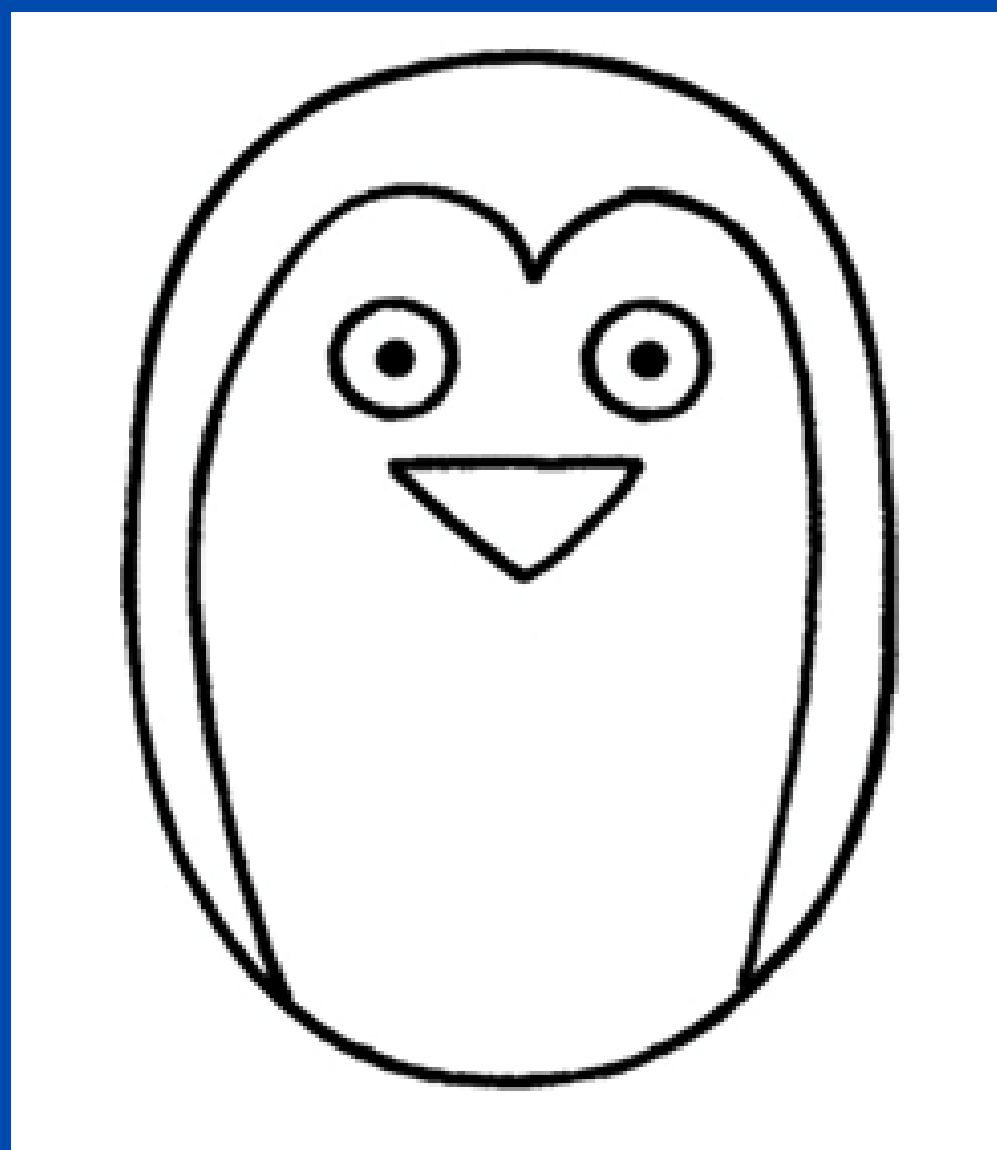
STEP 3.

LET'S GIVE OUR PENGUIN SOME EYES. DRAW TWO CIRCLES AND ADD DOTS IN THE MIDDLE FOR PUPILS.



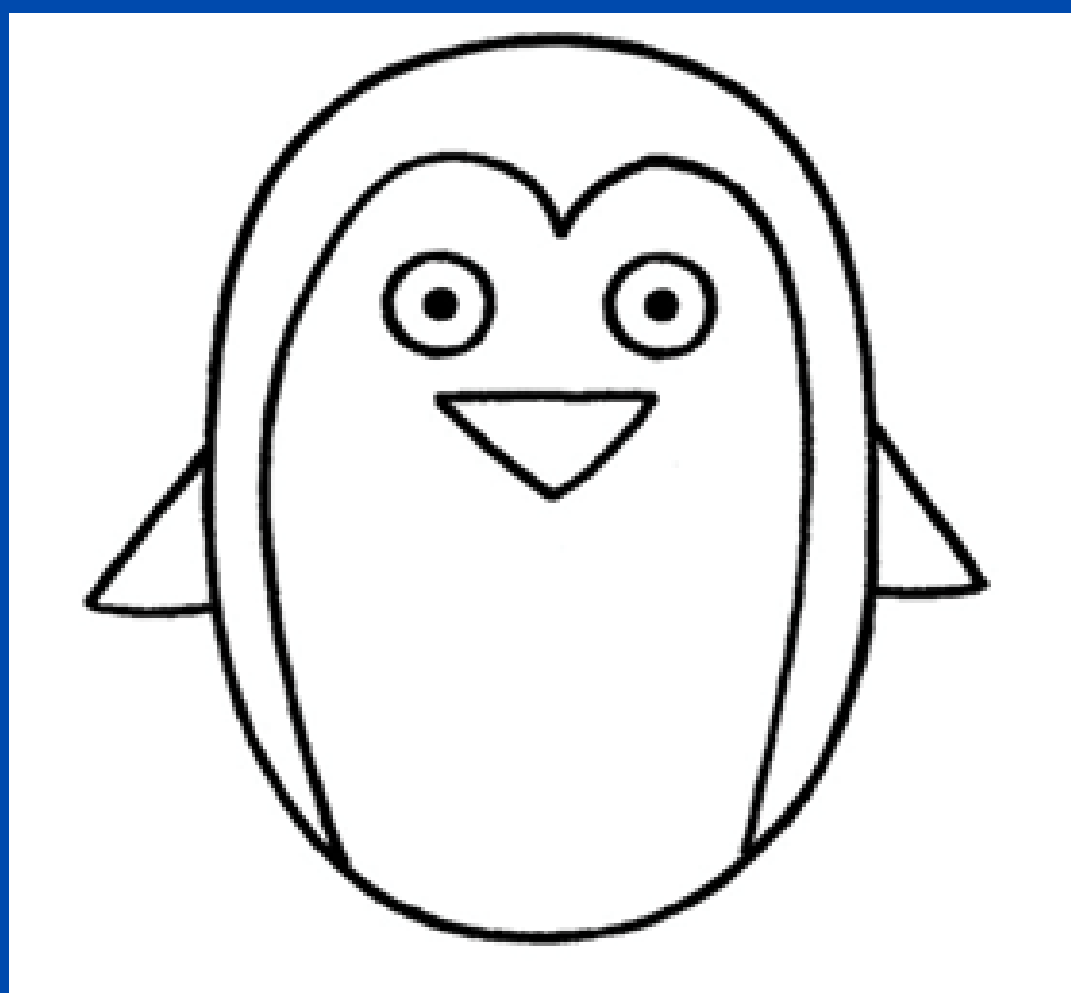
STEP 4.

NEXT, DRAW A TRIANGLE FOR THE NOSE.



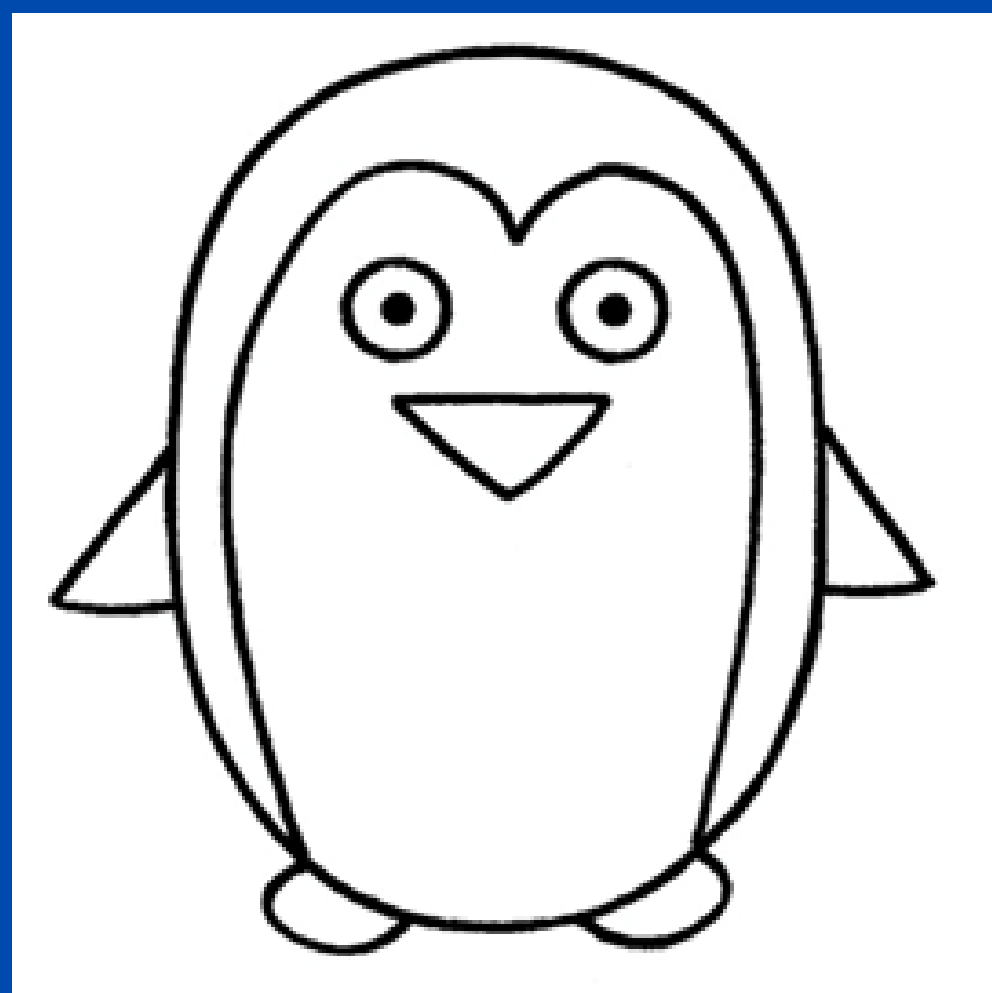
STEP 5.

NOW, DRAW THE PENGUIN WINGS. DRAW 2 TRIANGLES ON THE SIDE OF THE BODY.



STEP 6.

DRAW 2 LINES FOR THE SNOWMAN'S ARMS. NOW, DRAW 3 SHORT LINES COMING OUT OF THE END FOR THE FINGERS. THESE SHOULD LOOK LIKE BRANCHES.





STEP 7.
ALL DONE! TIME TO ADD
COLOR. GET CREATIVE
WITH IT AND HAVE FUN!

