

How to Draw a Bee

Difficulty-Beginner (K-12)

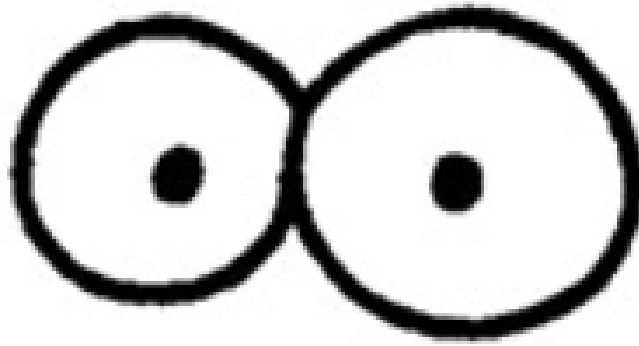
You will need:

- Paper
- Something to draw with (pencil, pen, marker, or whatever you'd like!)
- Colored pencils, crayons, or markers to color in your bee



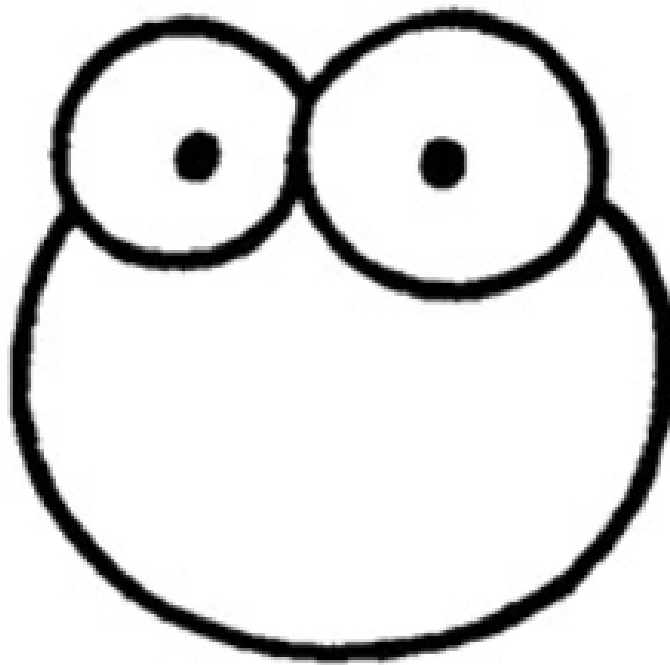
Step 1

Start by drawing 2 small circles right next to each other. These will be the bee's eyes. Draw 2 dots in the center for the pupils.



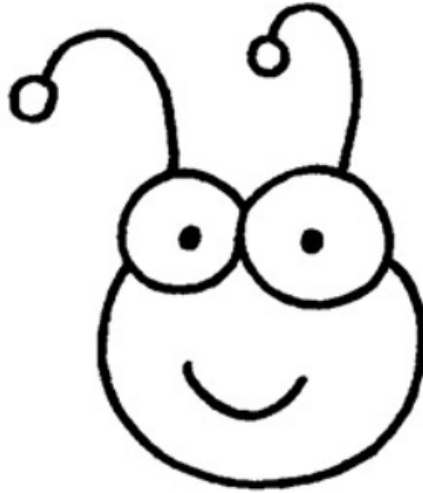
Step 2

Next, draw a circle for the head.



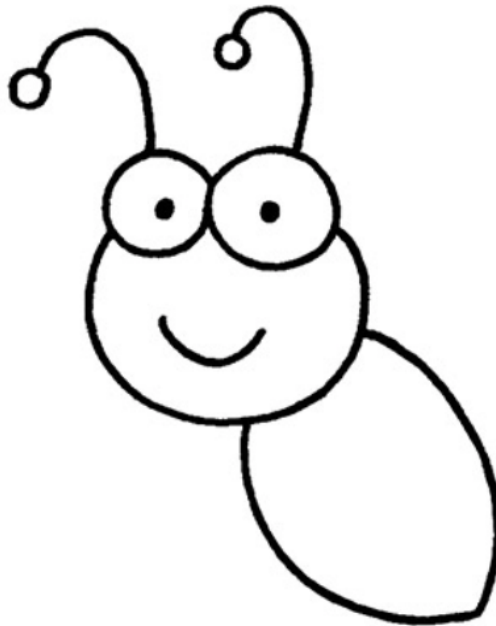
Step 3

Draw 2 curved lines for the antennae. Draw small circles at the end.



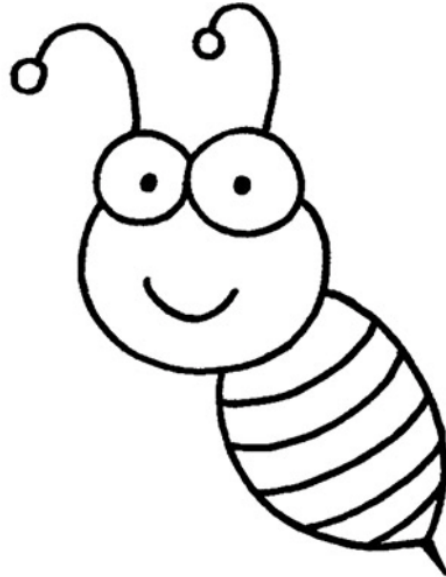
Step 4

Draw the body of the bee in the shape of an oval under the head.



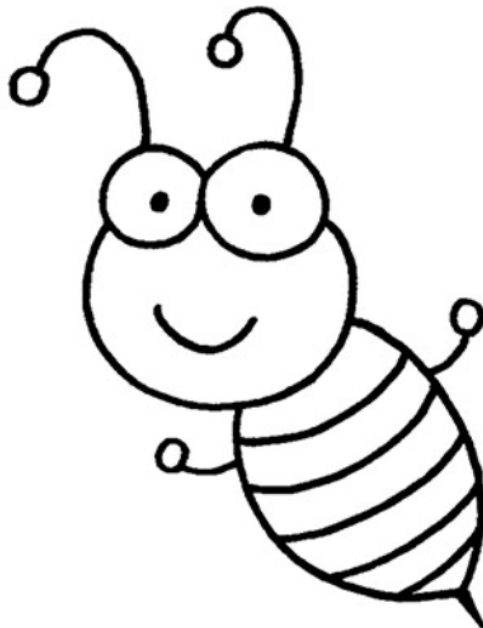
Step 5

Now draw the bee's stripes! Draw curved lines on the body like this.



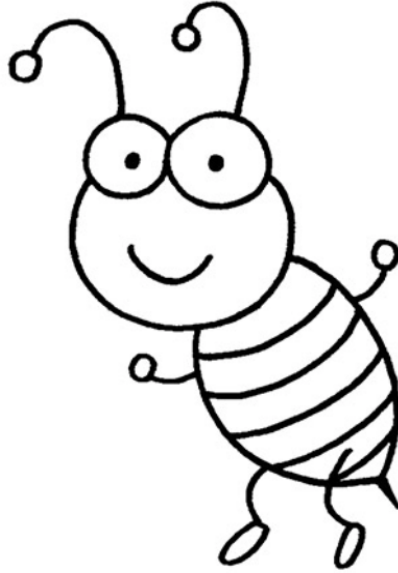
Step 6

Now let's draw the bee's arms towards the top of the body. Put circles on the ends.



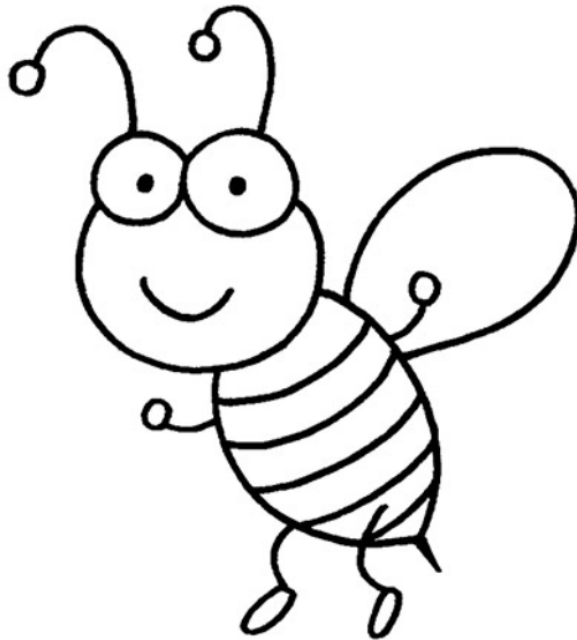
Step 7

Draw the legs the same way.



Step 8

Next, draw the wing.



Step 9

Now, draw the other wing and add color! Bees are known for their bright yellow color, but feel free to get creative with it!

