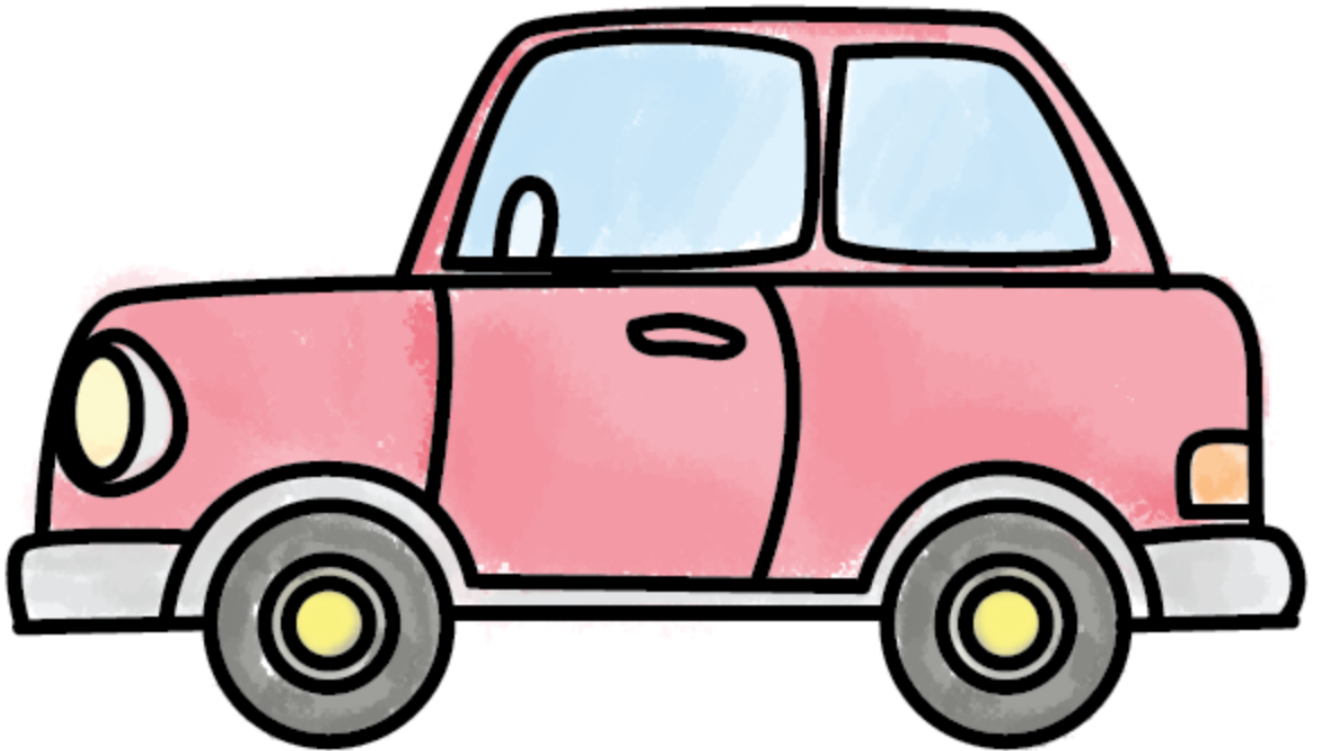


How to Draw a Car

Difficulty-advanced (grades 6-12)

You will need:

- Paper
- Something to draw with (pencil, pen, marker, or whatever you'd like!)
- Colored pencils, crayons, or markers to color in your car



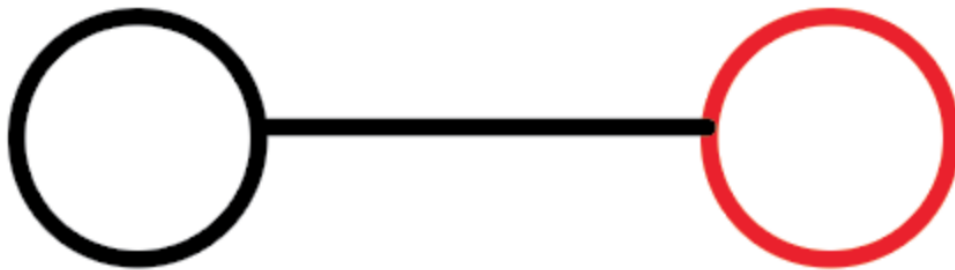
Step 1

Start by drawing a small circle with a medium-length line coming out of it.



Step 2

Draw another circle to connect to the line that you already drew.



Step 3

In the center of the circles, you will create two smaller circles. You are also going to draw a line on the left and right side of each “wheel” as pictured.



Step 4

Now, you are going to simply trace around the first wheel, along the black line, over the next wheel.



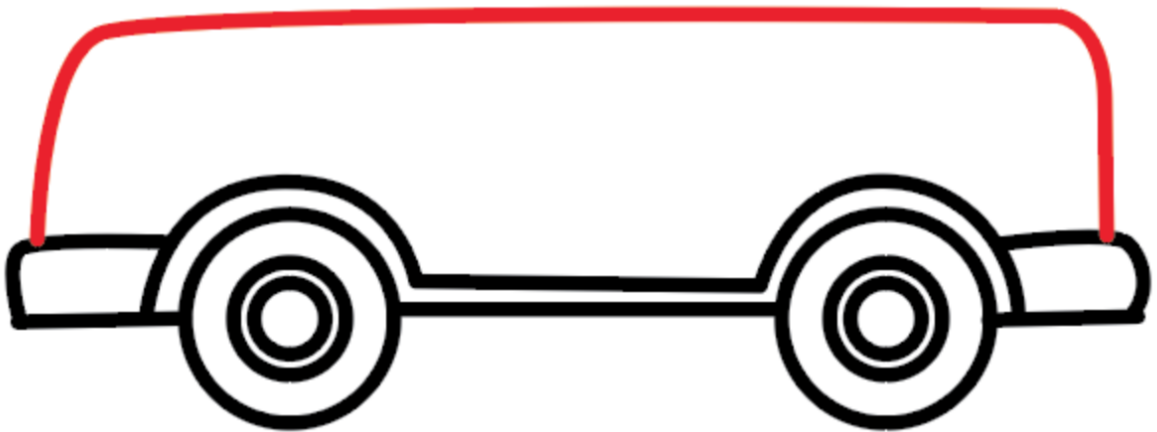
Step 5

You are going to add a little more detail to the car by closing in the lines with a rectangle shape on the ends.



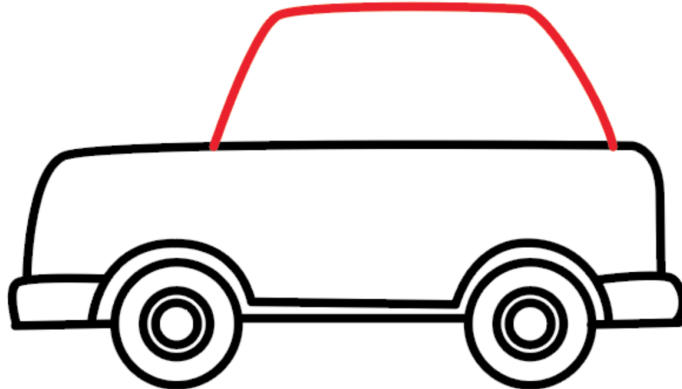
Step 6

Go ahead and start on the left side of the car and create a line, up and then all the way across the car to the other end. It should look like the picture below.



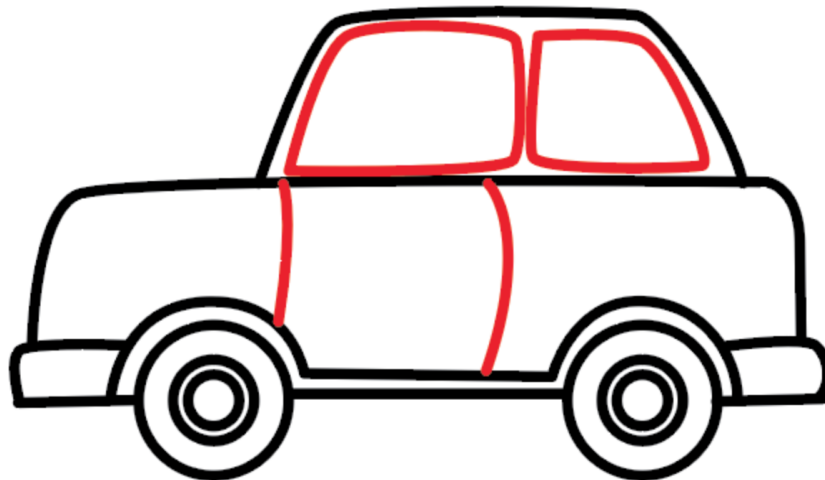
Step 7

Now you are going to create the hood of the car by making a smaller shape on top of the part of the car.



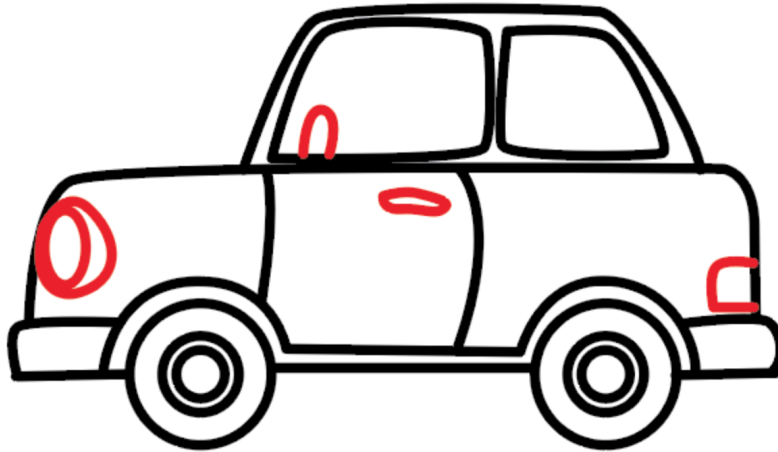
Step 8

Go ahead and trace little windows inside of the car and proceed to draw out the doors.



Step 9

Now is when you start adding the details. Add in a circle for the steering wheel. Don't forget about the handle to open the car. Plus, the headlight and taillight.



Step 10

It's time to color your car now! Use crayons, markers, or colored pencils to color in your car.

