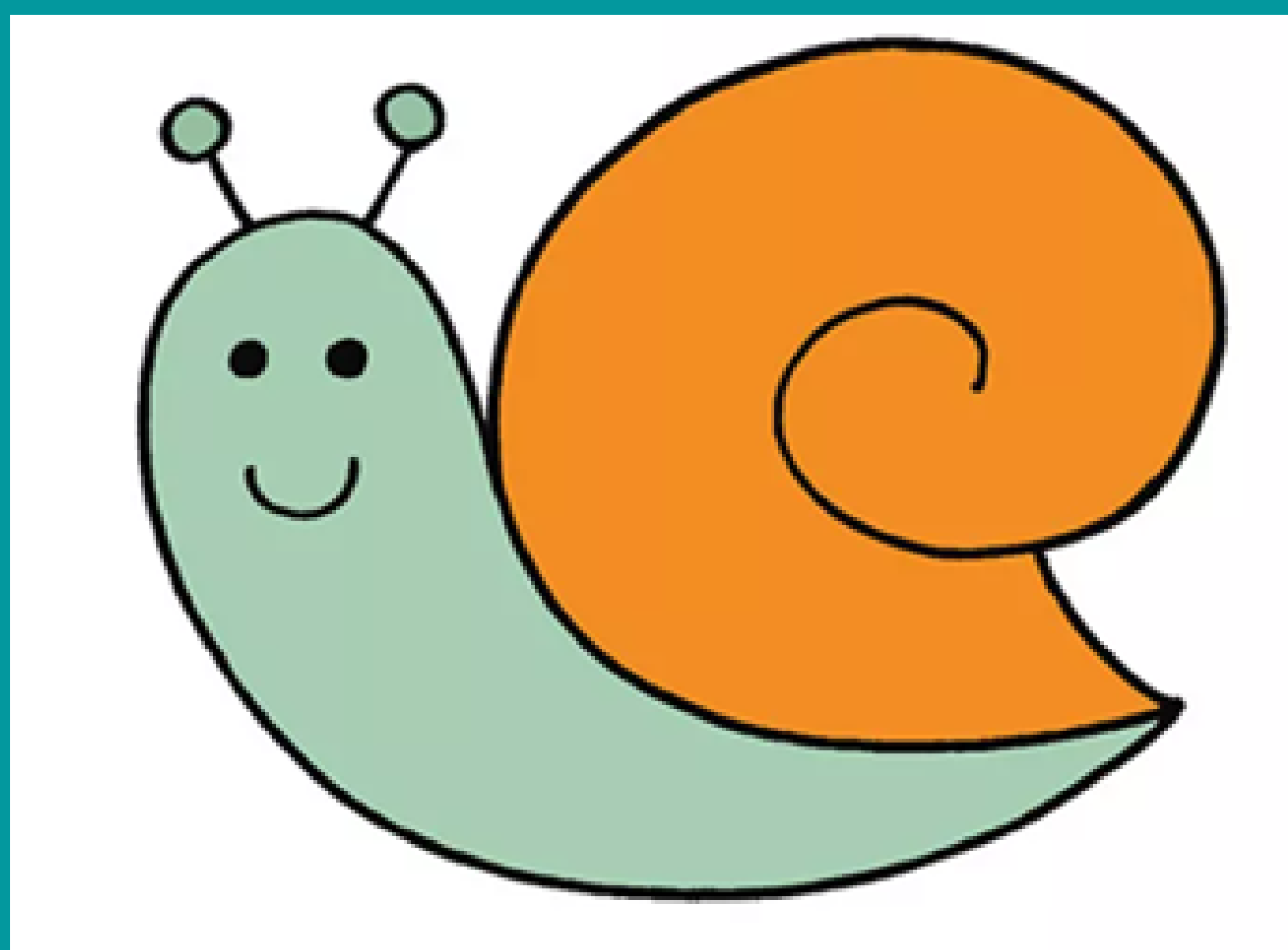


HOW TO DRAW A SNAIL - GRADES K-12

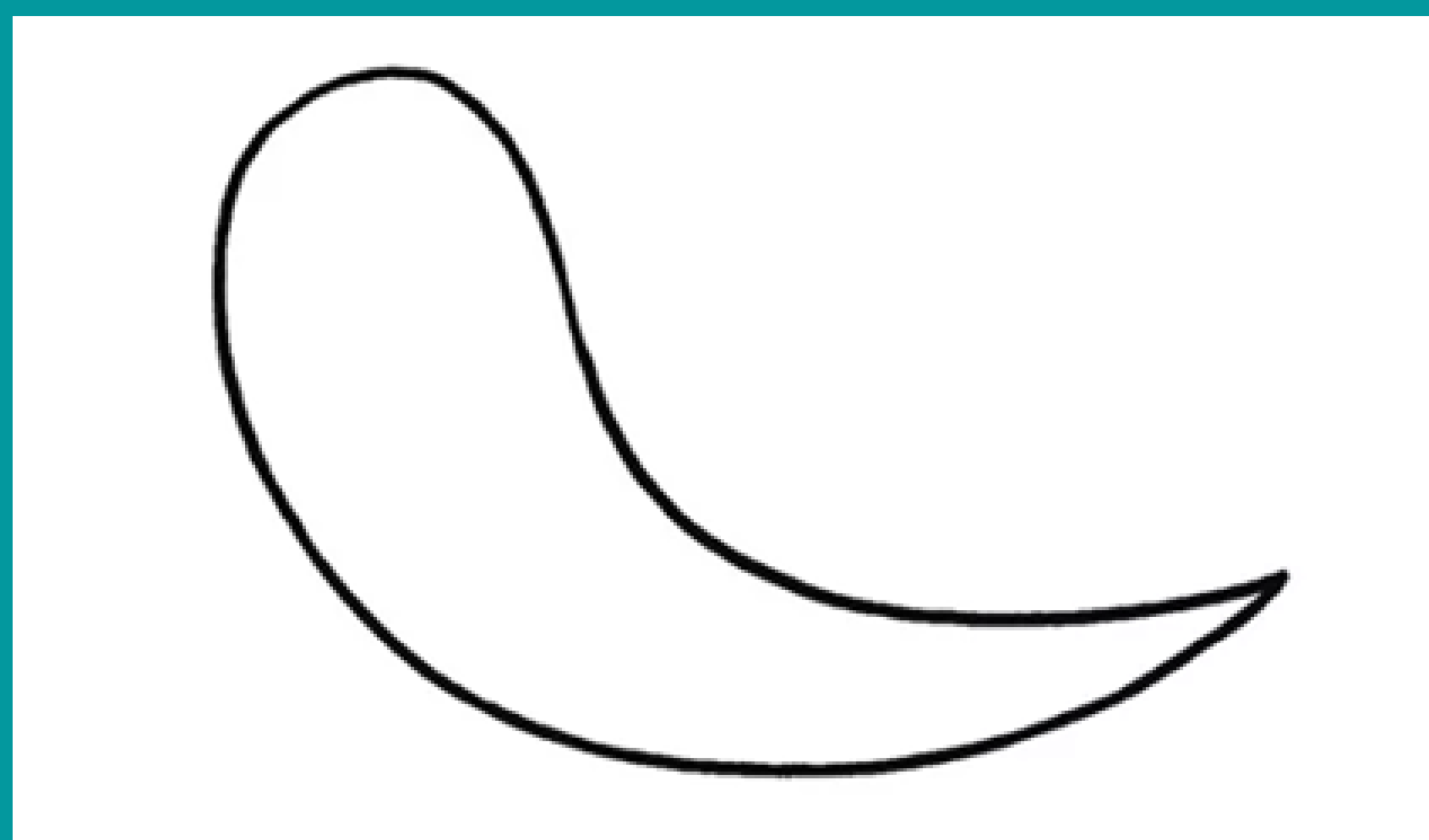
THIS LESSON TEACHES STUDENTS HOW TO DRAW A SNAIL FROM START TO FINISH.

MATERIALS NEEDED: PAPER AND PEN, PENCIL, MARKER, OR ANYTHING YOU'D LIKE TO DRAW WITH!



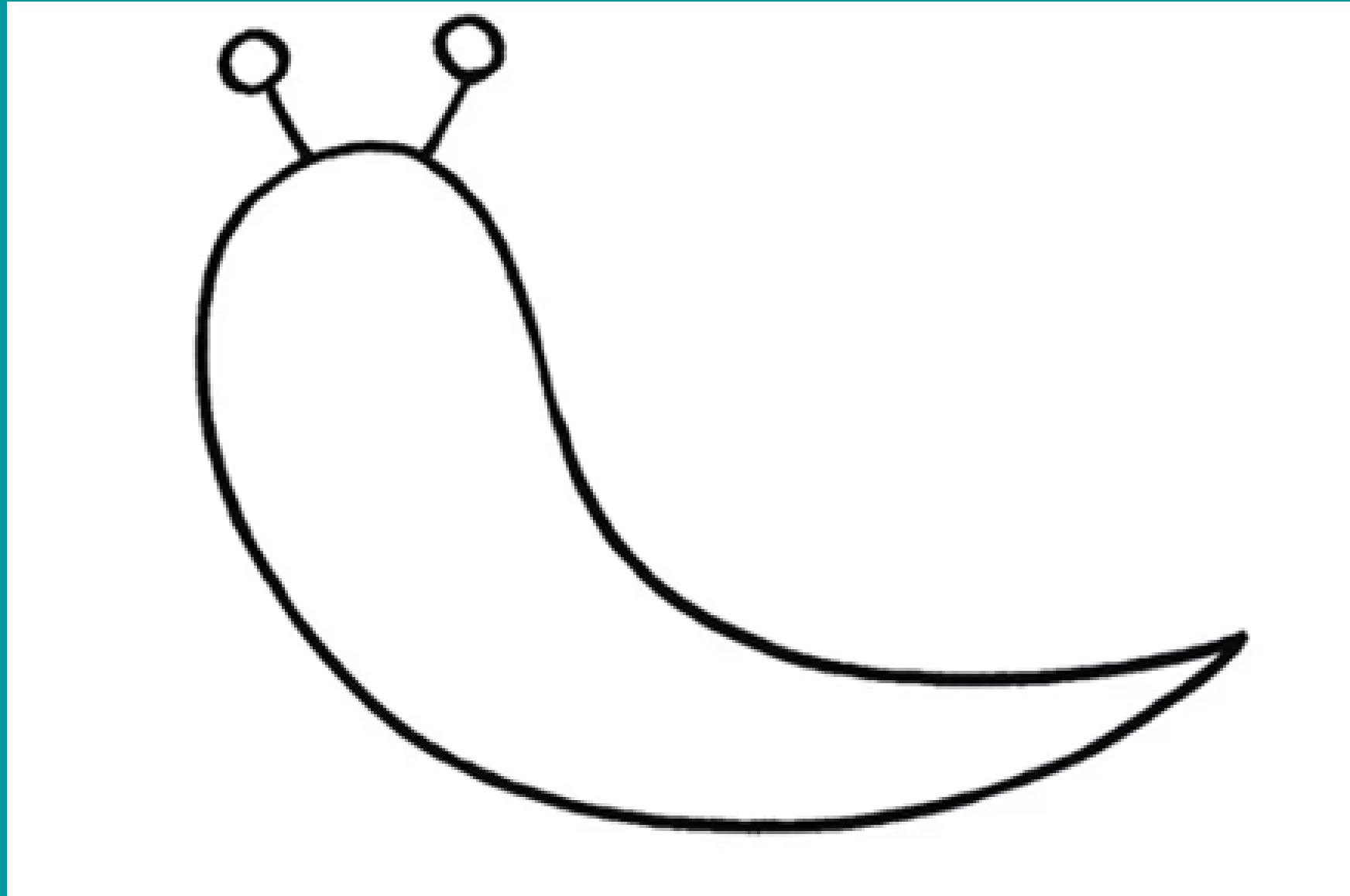
STEP 1.

DRAW A SNAIL'S BODY. THE BODY OF THE SNAIL FROM THE ROUND VERTICAL HEAD GRADUALLY NARROWS AND IN THE END PART GOES INTO A HORIZONTAL POSITION.



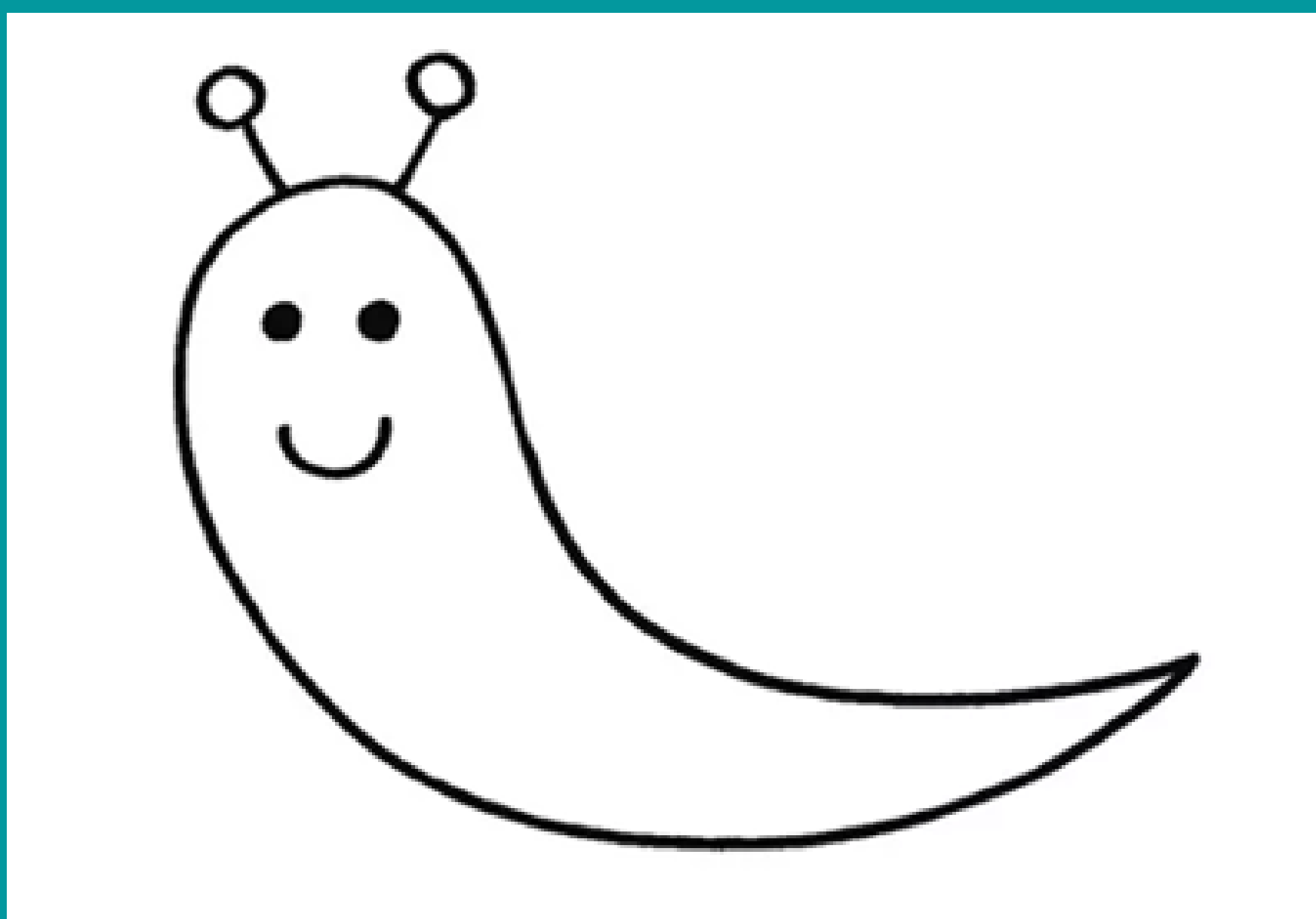
STEP 2.

ADD ANTENNAS. ON THE SNAIL'S HEAD, DRAW TWO VERTICAL LINES AND SMALL CIRCLES ON TOP.



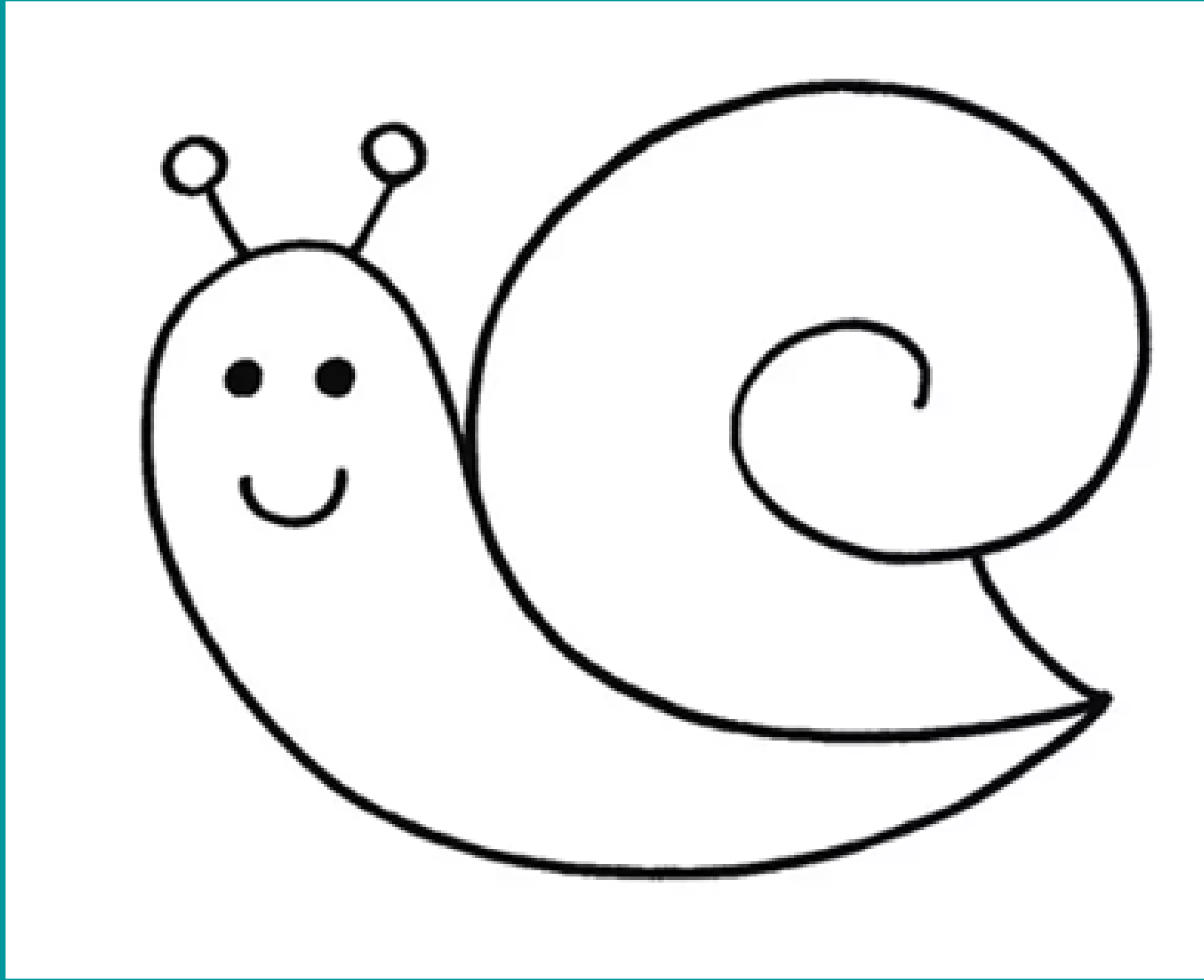
STEP 3.

DRAW THE FACE. NEXT, YOU NEED TO DRAW THE EYES IN THE FORM OF TWO SMALL DOTS, AND BELOW THE SMILE IN THE FORM OF AN ARC.



STEP 4.

DRAW A SHELL. THE SNAIL CARRIES ITS SHELL ON ITS BACK AND CAN ALWAYS HIDE IN IT IF NECESSARY. THE SHELL HAS A SPIRAL SHAPE.



STEP 6.

COLOR THE DRAWING HOWEVER YOU WOULD LIKE!

