

# Fireflies - Grades 7-12

Students will create drawing of fireflies.

## WHAT YOU NEED:

Pencils

Paper

Colored pencils or crayons or pastels or markers

**TEACHER ASKS:** Ask students to remember if they have ever seen fireflies. Teacher may want to show videos or pictures.



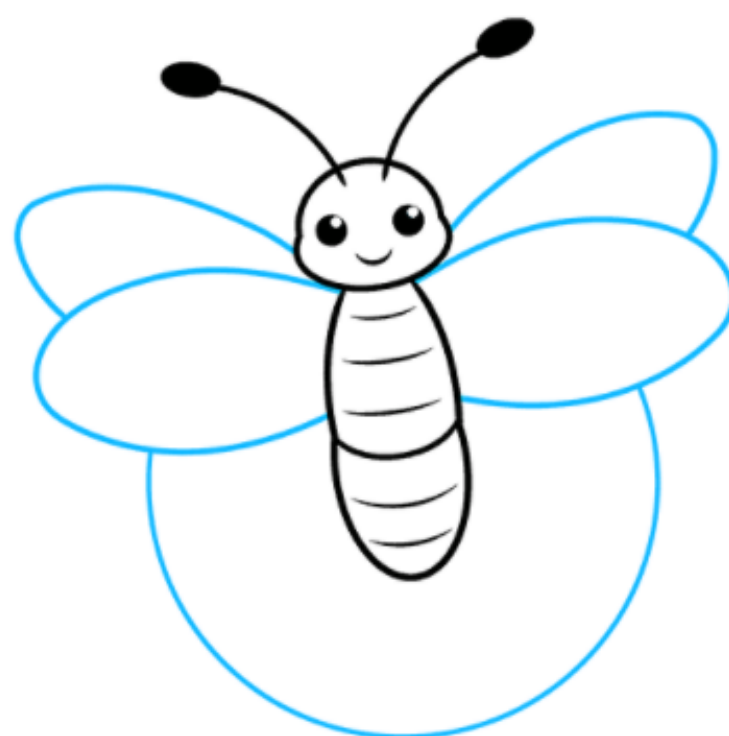
1. Begin by drawing the head of the first firefly. Use two curved lines to craft the irregular rounded shape.



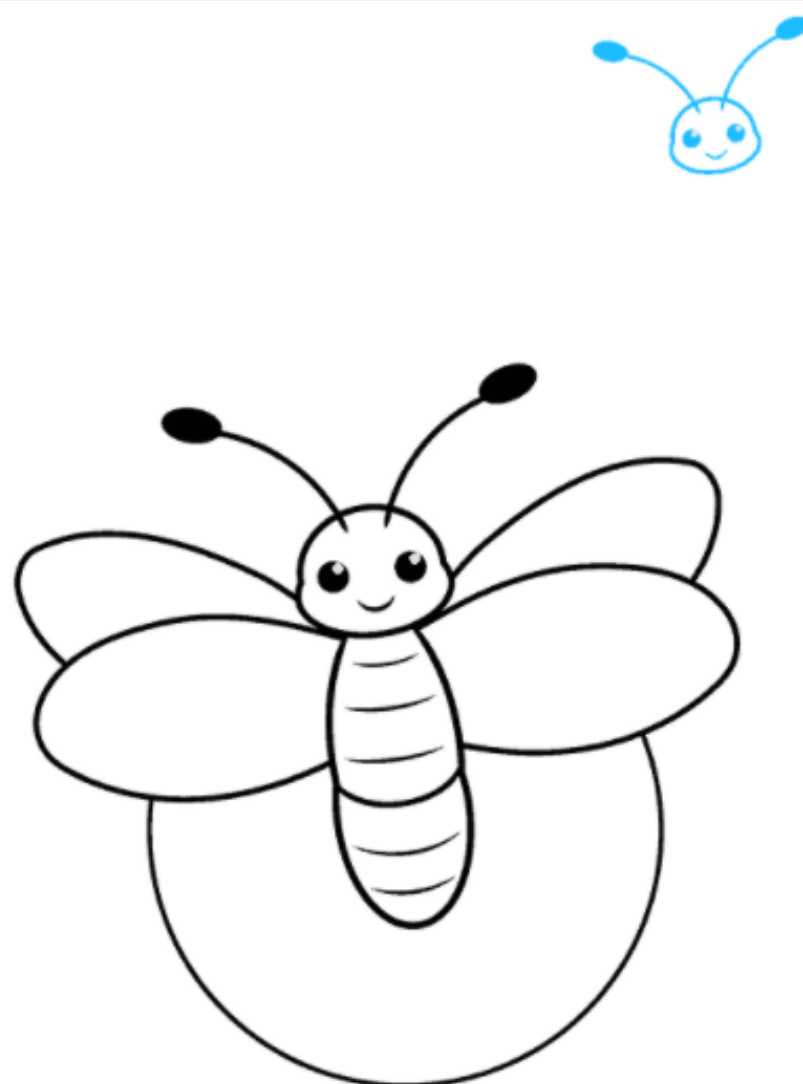
2. Detail the insect's face. For each eye, draw a circle within a circle and shade between them. Draw a wide "U" shaped line for the mouth. Extend curved lines from the top of the head, and shade an oval at the end of each. These are the bug's antennae.



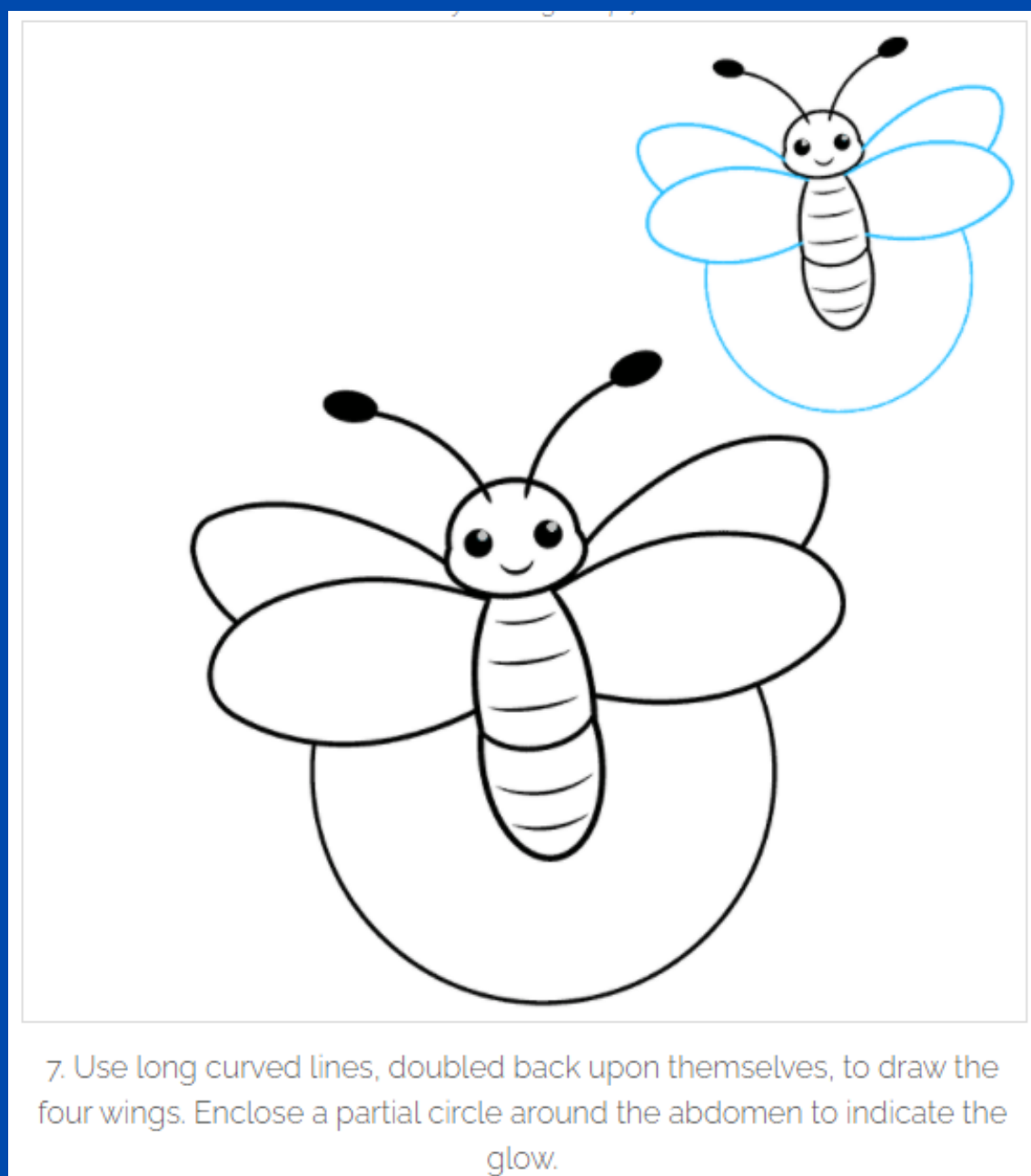
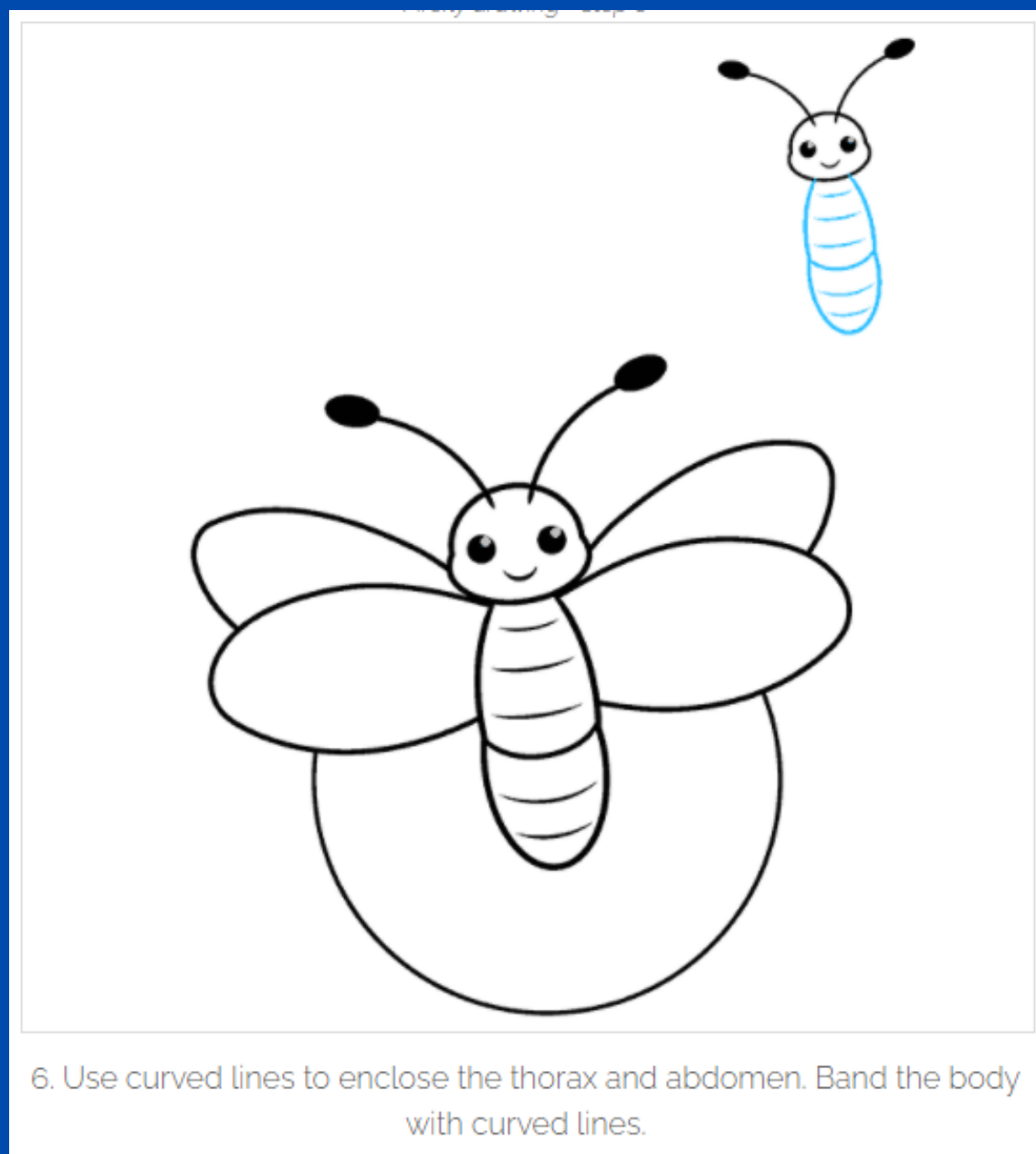
3. Use curved lines to draw the irregular shapes of the thorax and abdomen. Band the body with curved lines.

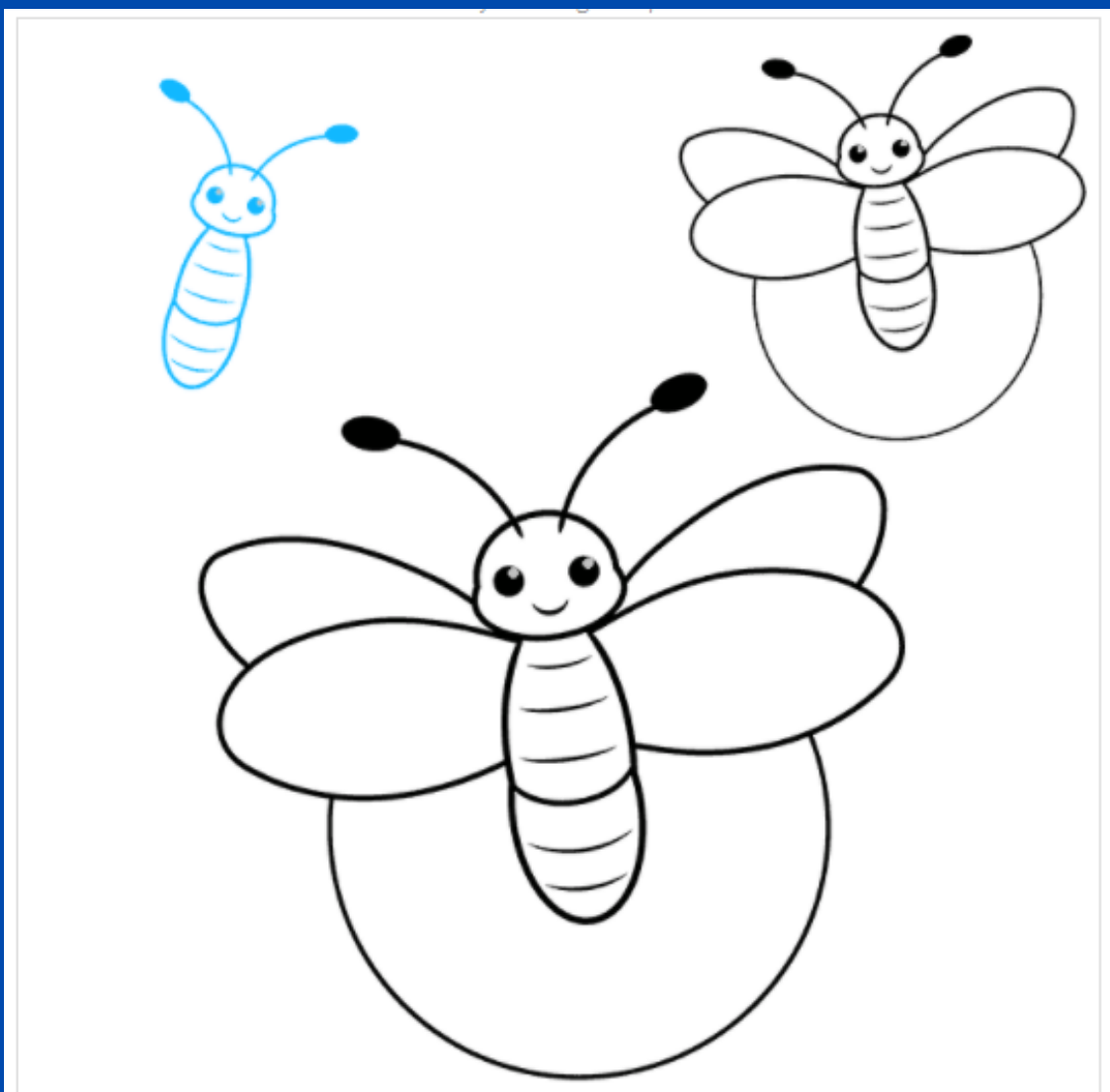


4. Use curved lines to draw the firefly's wings. Extend the wings from the thorax or midsection, and then double them back upon themselves. Enclose a partial circle around the bug's abdomen to indicate its glow.

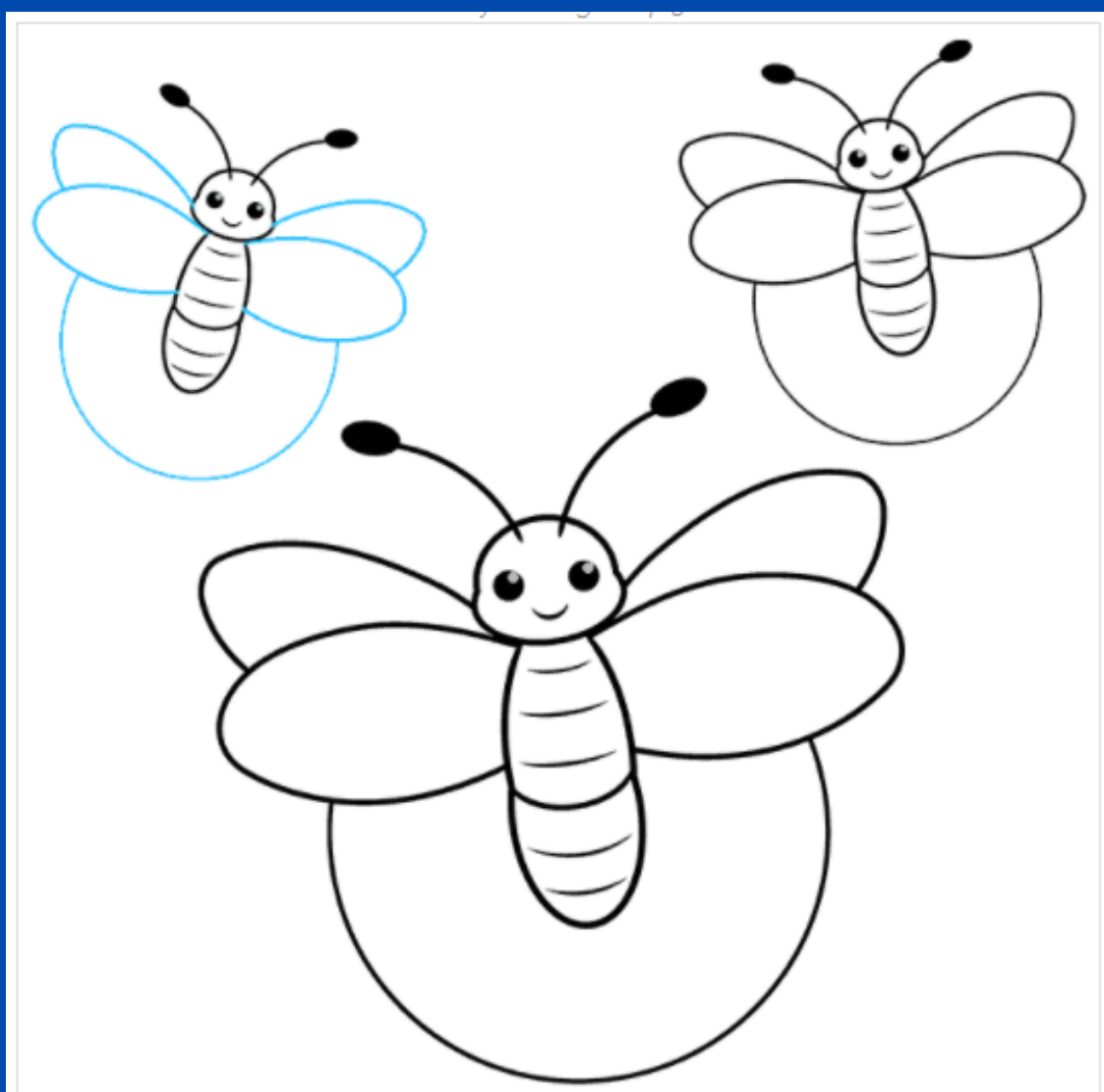


5. Begin drawing the second firefly. Use curved lines to outline its face. Draw a circle within a circle for each eye, and shade between them. Use a "U" shaped line for the mouth and long curved lines for the antennae. Shade an oval at the end of each antenna.

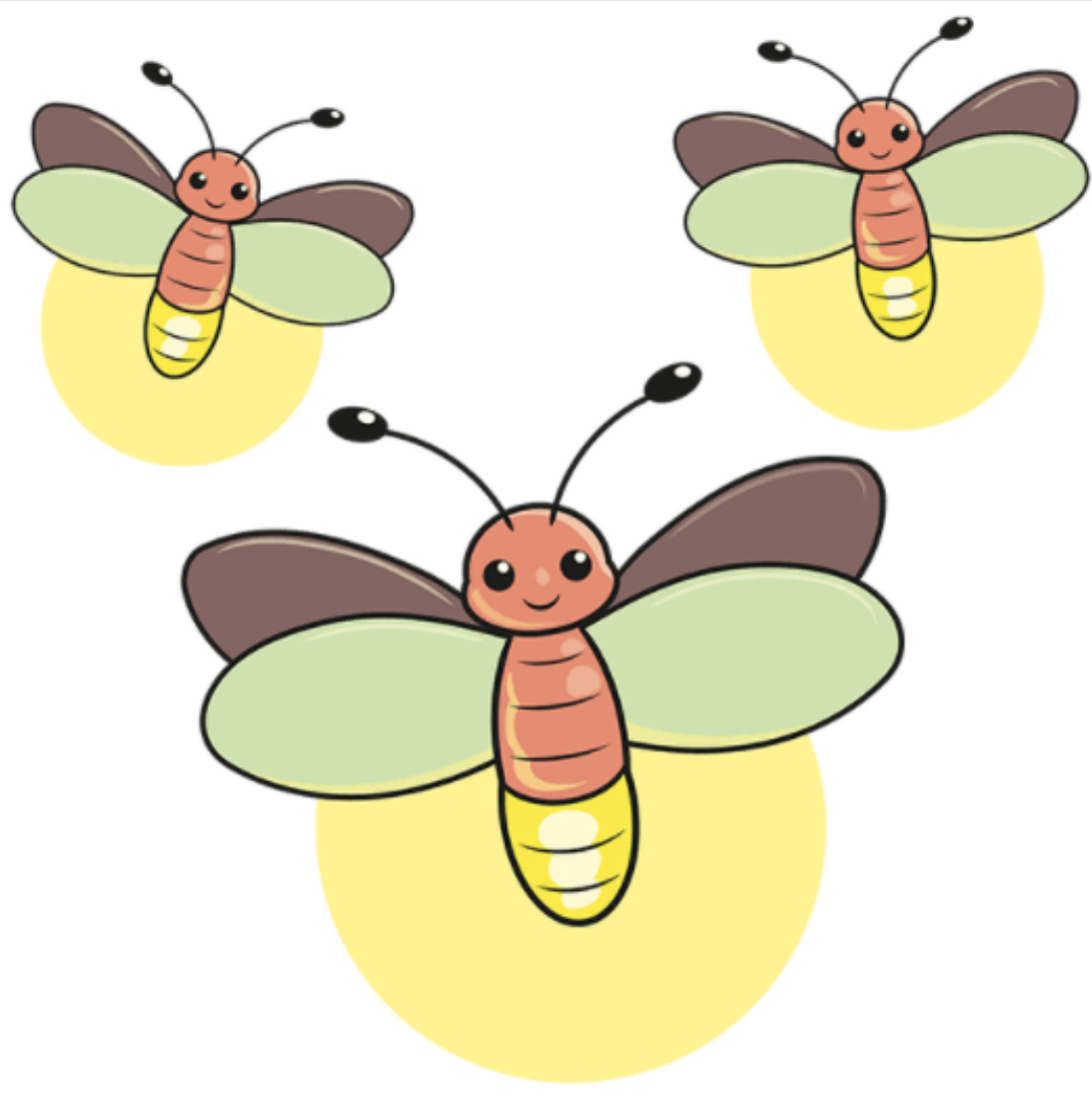




8. Draw the third firefly. Use curved lines to outline its face. Draw a circle within a circle for each eye, and shade between them. Use a "U" shaped line for the mouth and long curved lines for the antennae. Shade an oval at the end of each antenna. Use curved lines to enclose the thorax and abdomen. Band the body with curved lines.



9. Use long curved lines, doubled back upon themselves, to draw the wings. Enclose a partial circle around the abdomen to indicate the glow.



Color your cartoon fireflies. Most lightning bug species are black and orange in color, with yellow or green bioluminescence.

Will you keep your fireflies in a [jar](#) or let them roam free in their [forest](#) home? Why not draw both!